



FRUIT TREES & BUSHES

Add fruit trees or bushes to your urban garden to create a beautiful living fence, experiment with hard-to-find varieties, and enjoy incredibly fresh and delicious fruit from early summer through late fall.

AVAILABLE VARIETIES

Perennial fruit trees and bushes are a long-term investment. **On average, it will take trees 3-4 years after planting to begin producing, and bushes 2 years.** Perennial fruit will reach full production capacity a few years after this.

FRUIT	YEARS TO PRODUCE
Apple	2-5 Years
Cherry (Sour)	3-5 Years
Cherry (Sweet)	4-6 Years
Peach	2-4 Years
Pear	3-5 Years
Plum	3-5 Years
Blueberry	2-4 Years
Raspberry	2-3 Years
Blackberry	2-3 Years
Strawberries	1-2 Years

ORDER SOON!

Most local nurseries stock fruit trees in the early spring, and have good availability throughout the next few months. Availability drops drastically in July, however, so it is best to order by May 1st to ensure full selection.

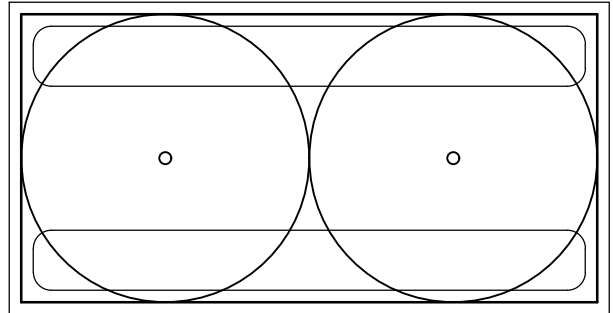


Grapes, hops, currants, meyer lemon, nectarine, fig, and other custom fruit varieties are also available, but require pricing on a case-by-case basis. Contact us if you are interested.

BLUEBERRY BED

Price: \$1,600

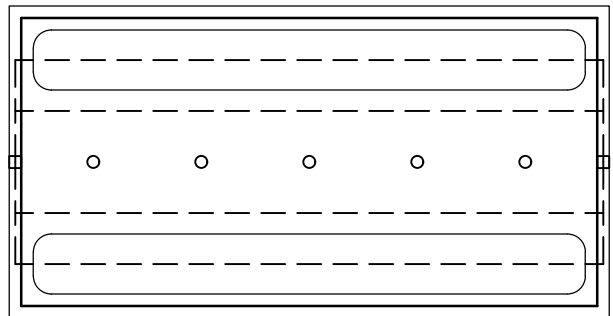
- 4'x8' cedar raised bed with organic soil
- 2 blueberry bushes
- 6' high pest fencing with bird netting
- Temporary annuals planting (Years 1-2)



RASPBERRY BED

Price: \$2,000

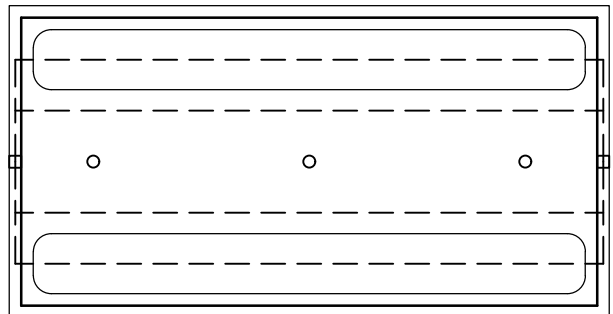
- 4'x8' cedar raised bed with organic soil
- 6 blueberry bushes
- 5' high wire trellis
- 6' high pest fencing with bird netting
- Temporary annuals planting (Years 1-2)



BLACKBERRY BED

Price: \$1,900

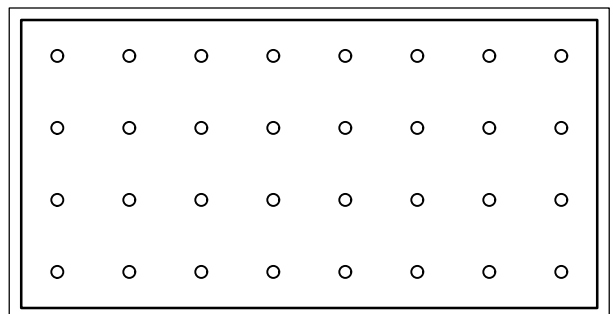
- 4'x8' cedar raised bed with organic soil
- 3 blueberry bushes
- 5' high wire trellis
- 6' high pest fencing with bird netting
- Temporary annuals planting (Years 1-2)



STRAWBERRY BED

Price: \$1,400

- 4'x8' cedar raised bed with organic soil
- 32 strawberry plants
- Standard pest fencing with bird netting



“STARTER PACK”

Price: \$900

- 2 dwarf/semi-dwarf trees
- Trunk protection
- 4'x6'x6' vinyl-coated deer fence
- Tree support system

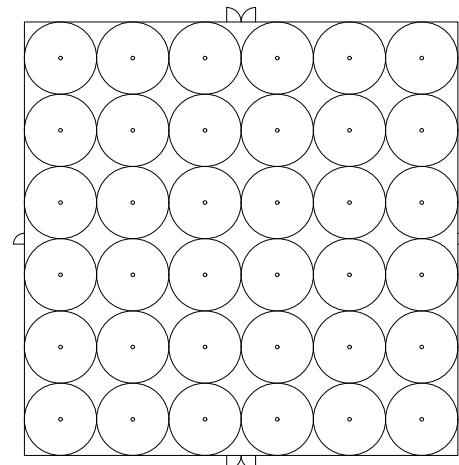
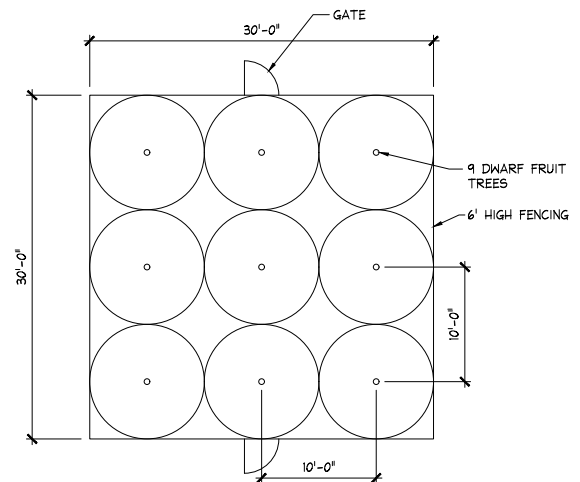
SMALL ORCHARD

- 30'x30' area
- 9 dwarf trees (apple, cherry, peach, plum, pear)
- 6' high fencing with 2 access gates
- Tree support system



LARGE ORCHARD

- 90'x90' area
- 36 semi-dwarf trees
- 6' high fencing with 4 access gates
- Tree support system



Plum trees are only available in dwarf and standard size. Apple, peach, pear, and cherry trees are available in dwarf, semi-dwarf and standard size!